

Z1189 OIL/SEDIMENT INTERCEPTOR WITH HEAVY-DUTY GRATE

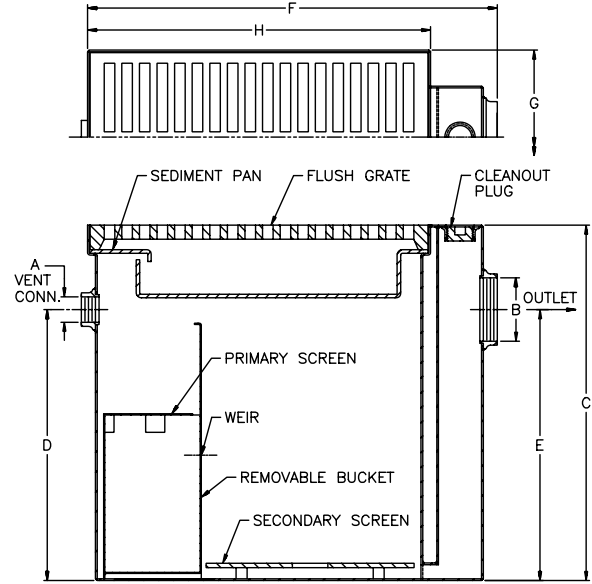


ENGINEERING SPECIFICATION

Zurn Z1189 oil/sediment interceptor features acid resistant coated interior and fabricated steel exterior, bronze cleanout plug and visible double wall trap seal, removable sediment bucket, horizontal baffle, internal vent connection, and Dura-Coated heavy-duty cast iron grate.

CAUTION

Interceptors must be maintained periodically in order to ensure proper operation of the system. Follow cleaning schedule based on usage.



PREFIXES	DESCRIPTION	SIZE	LIST PRICE
Z1189*	Acid Resistant Coated Fabricated Steel	12	3,683.00
		60	9,932.00
		100	14,115.00
		200	20,914.00
		300	27,608.00

SUFFIXES	DESCRIPTION	ADD
-DG	Duresist Grate	1,003.00

		SIZE	EA. ADDITIONAL	
			1" OVER 6"	UP TO 6"
-E	Acid Resistant Coated interior and exterior fabricated steel extension section. (Specify 'C' dimension required.)	12	95.00	619.00
		60	140.00	926.00
		100	200.00	1,226.00
		200	292.00	1,844.00
		300	387.00	2,435.00

-K	Anchor flange 1-3/4" down from top and 2" wide	SIZE	ADD
		12	769.00
		60	1,060.00
		100	1,335.00
		200	1,754.00
		300	2,315.00

-KC	Anchor flange 1-3/4" down from top and 2" wide	SIZE	ADD
		12	1,060.00
		60	1,593.00
		100	2,009.00
		200	2,580.00
		300	3,406.00

-PW	Plug Wrench		83.00
-----	-------------	--	-------

-SC	Heavy-Duty Solid Traffic Cover (maximum safe live load 10,000 lbs.)	SIZE	ADD
		12	691.00
		60	1,378.00
		100	2,248.00
		200	2,994.00
		300	3,953.00

BEST SELLERS		LIST PRICE
Z1189-12-2IP		3,683.00
Z1189-60-4IP		9,932.00
Z1189-100-4IP		14,115.00
Z1189-100-4IP-DG		15,118.00

Size	Sludge Capacity lb [kg]	Grate Open Area inch [mm]	No. of Grates	No. of Pans	Approximate Weight lb [kg]	Dimensions in inches [mm]							
						A Vent Size	B Pipe Size	C	D	E	F	G	H
12	12 [5]	49 [1245]	1	1	70 [32]	-	2 [51]	15 [381]	-	10-1/2 [267]	17-1/8 [435]	11-3/8 [289]	12-3/8 [314]
60	60 [27]	131 [3327]			175 [79]	25-1/4 [641]	19-1/4 [489]	17-5/8 [448]	29-1/8 [740]	12-3/8 [314]	24-3/8 [619]		
100	100 [45]	262 [6655]	2		280 [127]	2	4 [102]	33 [838]	27 [686]	22 [559]	41-1/8 [1045]	24-3/8 [619]	36-3/8 [924]
200	200 [91]	393 [9982]	3		370 [168]								48-3/8 [1229]
300	300 [136]	524 [13309]	4		460 [209]								

*Regularly furnished unless otherwise specified.

Items designated as Best Sellers are most specified and are generally in stock for shipment.

For additional product information, please visit www.zurn.com

INTRO
 ROOF DRAINS
 FLOOR DRAINS
 T, P, BW VALVES
 INTERCEPTORS
 CARRIERS
 HYDRANTS
 CLEANOUTS
 W/H
 SS DRAINS
 FAB SS DRAINS
 SANI-FLOOR
 TECH INFO